



Technology Transition Workshop

Ibis T5000™

Hardware and Maintenance

Overview

Kristin S. Lowery, Ph.D.

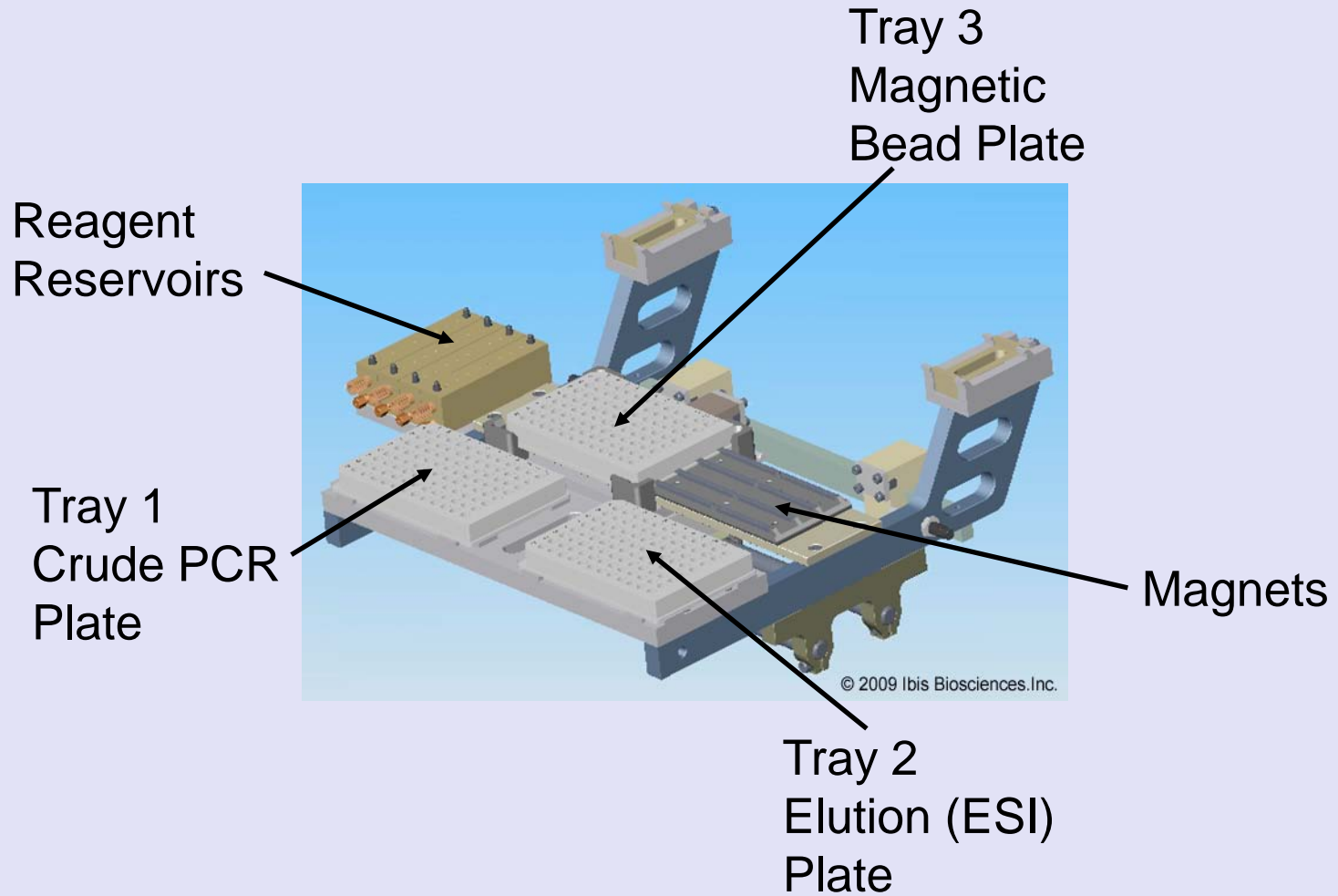
Ibis Biosciences, Inc.

Ibis T5000™ Components

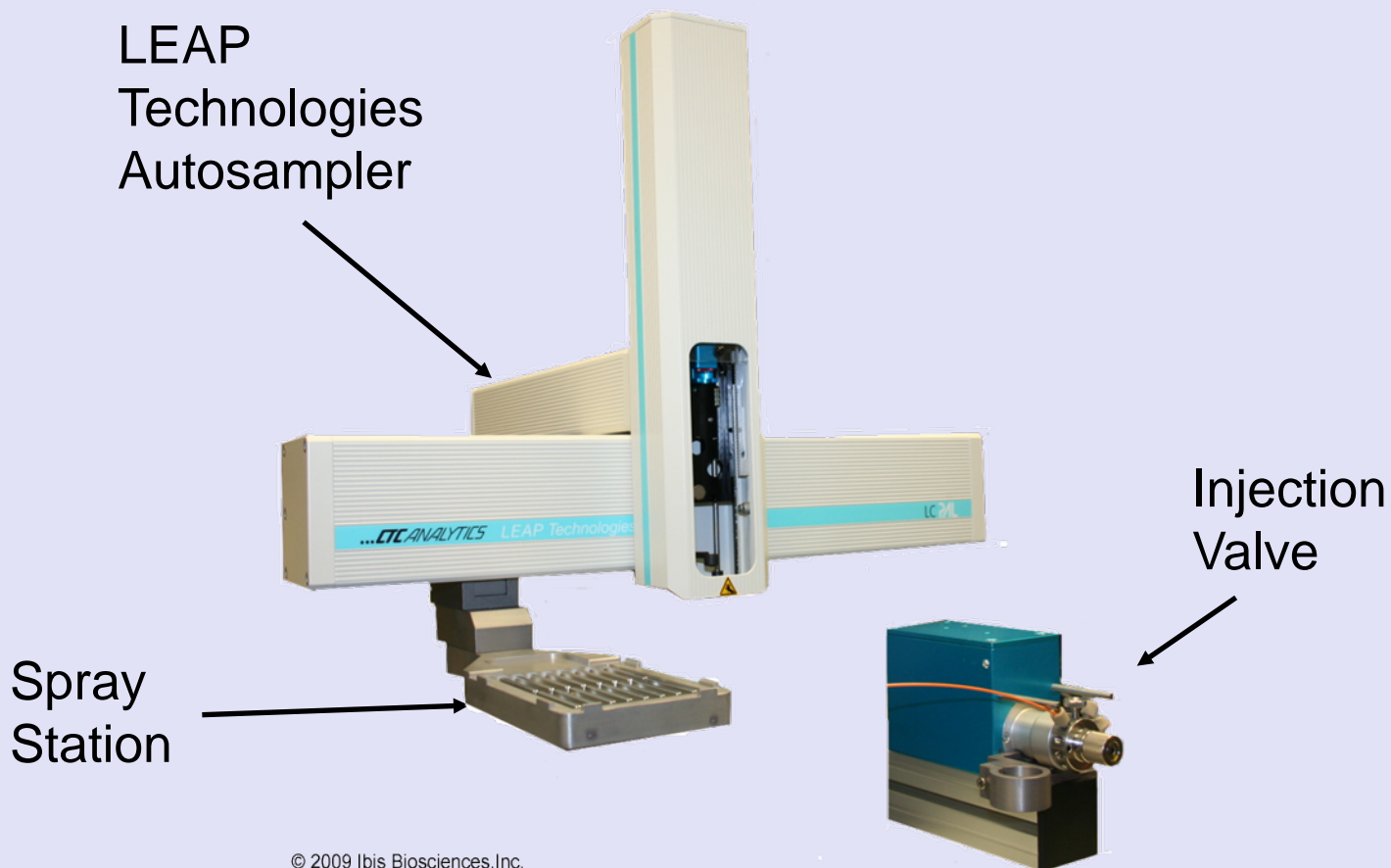


- Bruker Daltonics microTOF™
- Automated heat sealer
- Cleanup model
- Thermo Electron robotic arm
- LEAP Technologies autosampler
- Ibis T5000™ software
- Ibis T5000™ processor
- Processing computer
- Data acquisition computer
- JUN-AIR compressor (optional)

Cleanup Module



Ibis T5000™ Autosampler



Ibis T5000™ Reagents

System Waste
(Back)

System Water
(Front)

Clean-up
Reagent
1, 2, & 3
Bottles



Clean-up
Reagent 3

System Waste

- Reagent Consumption ~ 50 ml per plate
- System Liquid ~ 150 ml per plate
- System Waste ~ 300 ml per plate (25-30% MeOH)



Maintenance of Fluidic Components

- On a daily basis:
 - Ensure autosampler syringes are not bent
 - Check Cavro[®] syringes for leaks
- On a monthly basis:
 - Perform flush of system fluidics
 - Replace reagents and water
- As needed:
 - Clean syringes and surfaces with 70% isopropanol



Heat Sealer

- On a daily basis, ensure plate sealer roll has sufficient seals for run



Technology Transition Workshop

Ibis T5000™ ESI-TOF

- Yearly
 - PM visit including calibration of TOF
 - Run SRM 2392-I with positive controls
 - Demonstrate that instrument is calibrated in a NIST traceable way

Ibis T5000™ Software Errors

- Watch the splash screen for errors



Ibis T5000™ Software Errors

- Watch the splash screen for errors



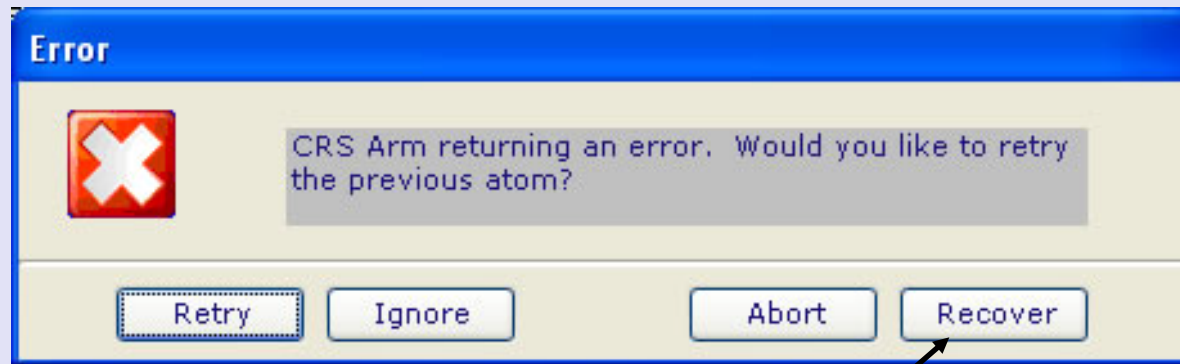


Error Recovery

- Check instrument power switches
- Check serial cable connections
- Check ethernet cable connections
- Contact Ibis service group

Arm Error Recovery

- **Retry** will retry the arm command
 - Use if a plate was missing, e.g if you indicated a run of 5 plates but only loaded 3
- **Ignore** will skip the command
 - Use if a plate was dropped



For Phone Applications Support Only

Other Common Errors

Error	Recovery Method
Barcode Read Failure	Manually enter the barcode
PCR plate status is "Kit"	Register the plates
Previously Registered MagBead/Elution plates	Get new plates
Z-Axis Crash on Leaps	Correct the problem if possible and hit Retry or Abort
Sealer Foil Error	Reload the foil or replace roll
Air in the tubing or syringes	Check the system liquid level and make sure tubing is in the liquid
Pumpbox syringe(s) leaking	Replace. Contact Ibis for a replacement syringe
Reservoirs overflowing	Check the system waste



Technology Transition Workshop

Contact Information:

Kristin S. Lowery, Ph.D.

Ibis Biosciences, Inc.

klowery@ibisbio.com

(760) 603-2453